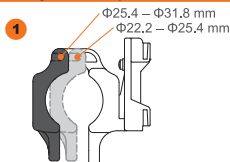
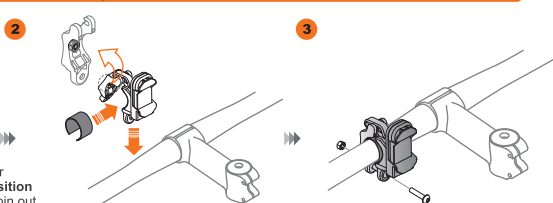


Adjust Clamp Size

Install Clamp



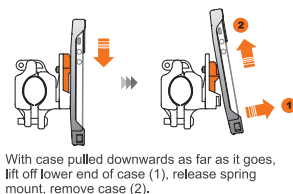
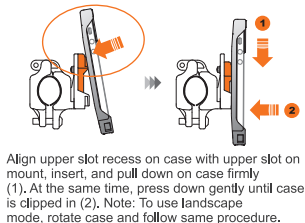
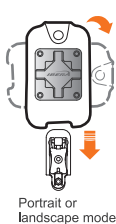
Clamp has two sets of pin holes for smaller or larger diameter handlebars. **Default position suits most bars** – to change setting, pull pin out with pliers, or push out with Allen key. Push pin into lower holes. Use supplied sizing pads for further adjustment if necessary.



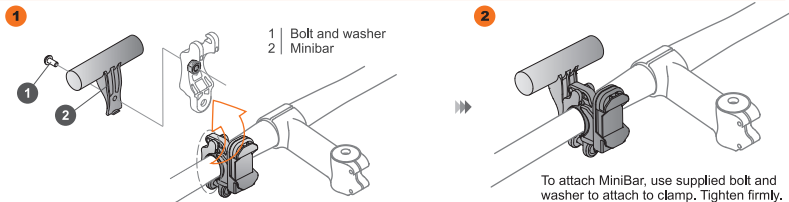
Position clamp on handlebars (case mount should face rear of bike). Screw in Allen bolt and tighten lightly.

Attach Case (to spring loaded mount)

Detach Case



Attach MiniBar For mounting headlight, computer, bell etc. (not supplied)



Limited Warranty

Ibera warrants this product for normal usage against workmanship, and material defects to the original purchaser for one year from purchase date. Products purchased online are not covered by this warranty unless purchased from an authorised Ibera online store. 1. User assumes all risk of personal injury, damage to or failure of the product when it is used in jumping, acrobatics or similar activities. 2. Warranty does not cover any incidental or consequential damages, such as personal injury or other losses due to accident, neglect, misuse, abuse, modification, normal wear and tear, improper care and cleaning, or failure to follow included instructions.

Warning Do not use for off-road riding. See other Ibera products at www.ibera.info

Ibera Co. Ltd.
Specifications subject to change without notice. Ibera is a trademark of Ibera Co. Ltd. All other trademarks are property of their respective owners. Copyright 2016 Ibera Co. Made in Taiwan. Ltd. Artwork: 4-2016.