

Spring-loaded stem mount

## Instructions

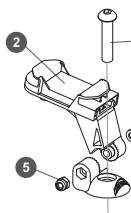
Tools required: 4 mm, 3 mm Allen keys

Portrait or landscape mode

## Parts

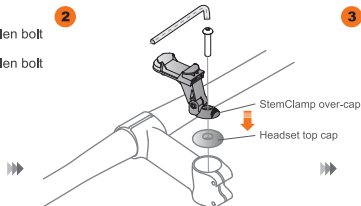
## Install Clamp

1



- 1 4 mm Allen bolt
- 2 Mount
- 3 3 mm Allen bolt
- 4 Washer
- 5 Nut

2



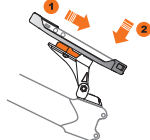
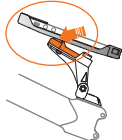
3



Remove bolt from your headset top cap, leaving cap itself in place. With the mount facing front of bike, fit StemClamp over-cap on top of headset top cap. Insert supplied longer stem bolt. Tighten snugly with 4 mm Allen key, but do not use force.\* NOTE: integral StemClamp over-cap does NOT replace your headset top cap, but fits on top of it.

With 3 mm Allen key, loosen the small Allen bolt, adjust angle of mount as desired, retighten well.

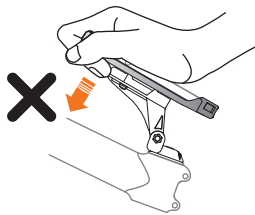
## Attach Case (to spring loaded mount)



Align upper slot in case with upper slot on mount, insert, and pull down on case firmly (1). At the same time, press down gently until case is clipped in (2). Note: To use landscape mode, rotate case and follow same procedure.

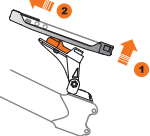


**Warning**



**Do not apply downward force to case.**

## Detach Case



With case pulled downwards as far as it goes, lift off lower end of case (1), release spring mount, remove case (2).

## Limited Warranty

Ibera warrants this product for normal usage against workmanship, and material defects to the original purchaser for one year from purchase date. Products purchased online are not covered by this warranty unless purchased from an authorised Ibera online store. 1. User assumes all risk of personal injury, damage to or failure of the product when it is used in jumping, acrobatics or similar activities. 2. Warranty does not cover any incidental or consequential damages, such as personal injury or other losses due to accident, neglect, misuse, abuse, modification, normal wear and tear, improper care and cleaning, or failure to follow included instructions.

Case drawing for illustration only, may not correspond your case.\* See headset manufacturer's instructions for more detailed information.

**Warning** Always ensure your phone is secure before using. Do not use for off-road riding. See other Ibera products at [www.ibera.info](http://www.ibera.info)

**Ibera Co. Ltd.**

Specifications subject to change without notice. Ibera is a trademark of Ibera Co. Ltd. All other trademarks are property of their respective owners. Copyright 2016 Ibera Co. Made in Taiwan. Ltd. Artwork: 4-2016.